



CRC7000

30A HID Relay

Overview

The CRC7000 is a mechanically latching output device that provides ON/OFF control of lighting and other electrical loads and is capable of controlling circuits rated up to 30 A at 347 VAC. The lever style manual override switch allows relays to be mechanically connected to accommodate 2-pole loads. When paired with a NexLight Lighting Control System, it comes with NexLight's industry-best 20-year warranty.



Features

- » Rated for 240,000+ operations at full load
- » Rated full life with HID load
- » Field configurable for 2-pole loads
- » At-a-Glance ON/OFF status indication
- » Relay status sent back to NexLight Lighting Control System for true status within software and switches

UL/cUL Certifications

General Use:	30 A @ 347 VAC
Tungsten:	2400 W @ 120 VAC 4800 W @ 240 VAC
Electronic Ballast:	16 A @ 120/277 VAC
(Standard) Ballast:	20 A @ 300 VAC 10 A @ 347 VAC
Motor:	1 HP @ 100 VAC to 125 VAC 1.5 HP @ 220 VAC to 277 VAC
SCCR:	14,000 A @ 277 VAC
2-Pole Configuration:	120/277/347 VAC per pole (208/240/480 VAC loads)

Accessories

CRC9321

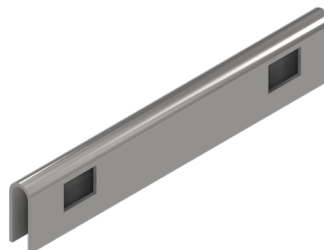
Mechanical Relay Coupler (MRC)

Physical Specification

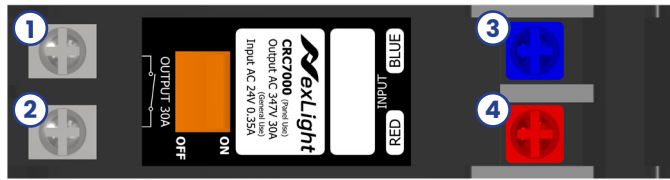
Dimensions:	0.98" H x 3.77" W x 2.35" D (25 mm x 96 mm x 60 mm)
Mounting:	CRC9000 Panel Mounting Strap (x1)
Temperature Rating:	32 °F to 122 °F (0 °C to 50 °C)
Weight:	6.17 oz (175 g)

Electrical (Low Voltage)

Voltage:	±24 VDC Reverse Polarity (±24 VAC Half-Wave, Class II)
Current Draw:	350 mA



Terminal Identification

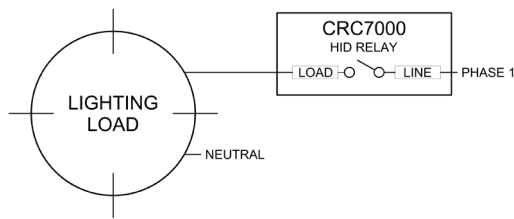


- 1. Load
- 2. Line
- 3. 24 VAC Common
- 4. 24 VAC Control

Wiring Diagrams

Control of 2-pole loads can be achieved using the Mechanical Relay Coupler. Wiring of both single pole and 2-pole loads are illustrated in the diagrams below.

Single Pole Configuration



2-Pole Configuration

