



# NXL-00P5

## 0–10V Dimming Expansion Panel

### Overview

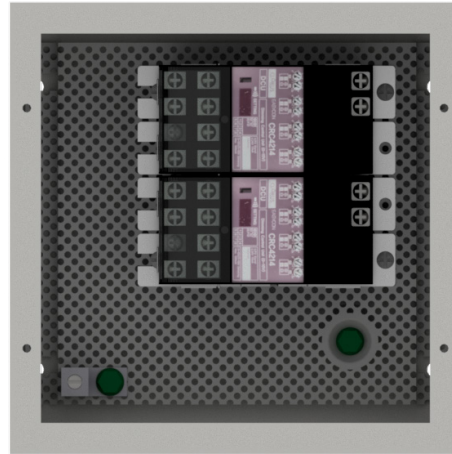
The NexLight NXL-00P5 accessory panel allows for the easy addition of extra dimming channels to the NexLight Lighting Control System. This small enclosure can easily be mounted in the controlled space or wherever additional dimming channels are required. The (2) CRC4214 Dimming Control Units can provide up to (8) extra channels of 0–10V dimming which can also be used in Correlated Color Temperature (CCT) applications to adjust lighting temperatures. This panel is powered solely by the NexLight 2-Wire Data Bus and requires no additional control power.

### Physical Specification

|                               |   |
|-------------------------------|---|
| <b>NEMA Type:</b>             | Type 1  |
| <b>Mounting:</b>              | Surface Mount   |
| <b>Operating Temperature:</b> | 14 °F to 131 °F (–10 °C to 55 °C)                         |
| <b>Dimensions:</b>            | 8.00" H x 8.00" W x 4.00" D<br>(203 mm x 203 mm x 102 mm) |
| <b>Weight:</b>                | 6.128 lb (2.780 kg)                                       |

### Included Components

| Qty: | P/N:    | Description          |
|------|---------|----------------------|
| 2    | CRC4214 | Dimming Control Unit |
| 1    | PA-80-1 | Panel Assembly       |



### Features

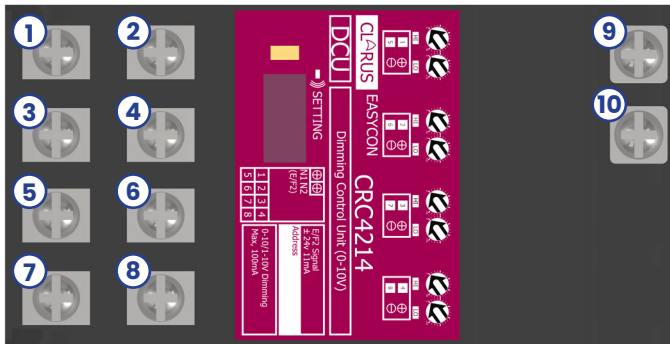
- » Provides (8) additional 0 – 10 V dimming channels with 100 mA of sinking current per channel
- » Compatible with R Series, D Series, and Custom Panels
- » Physical potentiometers provide high/low trim adjustment for each channel

### Electrical (Low Voltage)

|                                    |                            |
|------------------------------------|----------------------------|
| <b>Data Input:</b>                 | ±24 VAC, Signal            |
| <b>Data Output:</b>                | ±24 VAC, Signal            |
| <b>0 – 10 VDC Sinking Current:</b> | 100 mA Per Dimming Circuit |
| <b>0 – 10 VDC High Trim:</b>       | 100% to 50%                |
| <b>0 – 10 VDC Low Trim:</b>        | 0% to 50%                  |
| <b>System mA Draw:</b>             | 22 mA                      |
| <b>System Addresses Used:</b>      | 8                          |



## Terminal Identification



1. Dimmer 1 (-)
2. Dimmer 1 (+)
3. Dimmer 2 (-)
4. Dimmer 2 (+)
5. Dimmer 3 (-)
6. Dimmer 3 (+)
7. Dimmer 4 (-)
8. Dimmer 4 (+)
9. 2-Wire Data Bus
10. 2-Wire Data Bus

