



NXL-AVI

Contact Input Panel

Overview

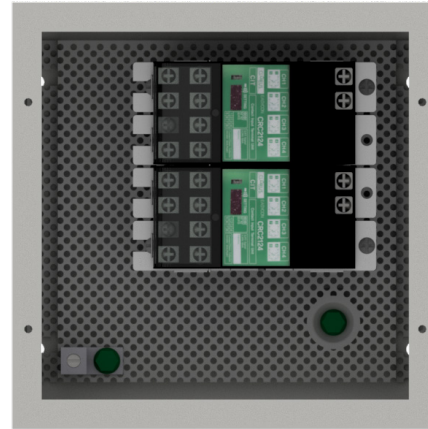
The NexLight NXL-AVI accessory panel provides dry contact closure integration with the NexLight Lighting System. This panel is commonly used for integration of A/V systems but can be utilized in a wide variety of applications. Contact closures may be maintained or momentary allowing for flexibility in achieving the desired sequence of operation. The NXL-AVI is powered solely by the NexLight 2-Wire Data Bus and requires no additional control power.

Physical Specification

NEMA Type:	Type 1
Mounting:	Surface Mount
Operating Temperature:	14 °F to 131 °F (-10 °C to 55 °C)
Dimensions:	8.00" H x 8.00" W x 4.00" D (203 mm x 203 mm x 102 mm)
Weight:	6.173 lb (2.800 kg)

Electrical (Low Voltage)

Data Input:	±24 VAC, Signal
Data Output:	±24 VAC, Signal
System mA Draw:	12.0 mA
System Addresses Used:	0



Features

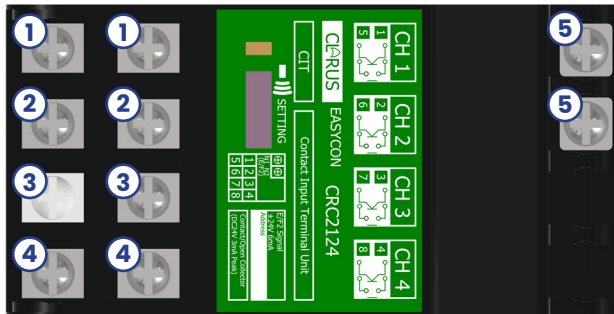
- » Provides (8) contact inputs that accept "dry" contact closures
- » Compatible with R Series, D Series, and Custom Panels
- » Simple integration of 3rd party systems and devices into the NexLight Lighting Control System
- » Maintained closures control Individual Addresses and Group Addresses
- » Momentary closures control Scene Addresses

Included Components

Qty:	P/N:	Description
2	CRC2124	Contact Input
1	PA-80-1	Panel Assembly



Terminal Identification



1. Contact Input 1
2. Contact Input 2
3. Contact Input 3
4. Contact Input 4
5. 2-Wire Data Bus

Contact Input Control

Input Type	Input Status	Resulting Control		
		Individual	Group	Scene
Maintained	Closed	ON	ON	EXECUTE
	Open	OFF	OFF	-
Momentary	Closed	ON*	ON*	EXECUTE
	Open	OFF*	OFF*	-

*Function not recommended

