



PA-140-1

Panel Assembly

Overview

The NexLight PA-140-1 Panel Assembly is an enclosure designed to accept a full complement of the CRC9000 mounting straps used to secure NexLight panel-mounted system components. This panel assembly offers the ability to remotely locate NexLight control components reducing required field wiring by the installer.

Physical Specification

NEMA Type:	Type 1
Mounting:	Surface Mount
Dimensions:	14.00" H x 12.00" W x 6.00" D (356 mm x 305 mm x 152 mm)
Weight:	12 lb 13 oz (5.81 kg)

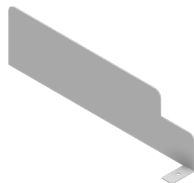
Accessories

TR-5024

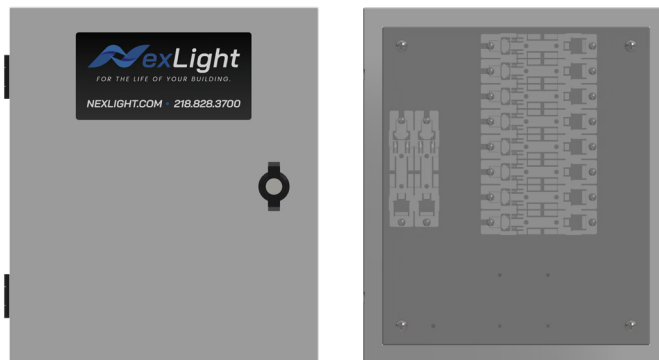


50 VA, 24 VAC Transformer

VB-1



Voltage Barrier



Features

- » NEMA Type 1 surface mount enclosure
- » Hinged cover with robust locking mechanism including (2) keys
- » Laser cut subplate for precision build quality

Included Components

Qty:	P/N:	Description
1	ENC-141	Enclosure
1	SP-141	Subplate
10	CRC9000	Mounting Straps
1	0810168	Key Locking Door Latch

