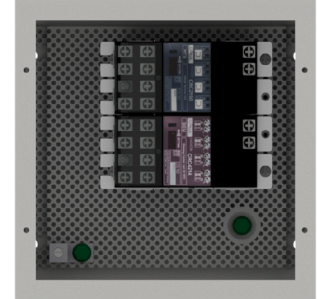
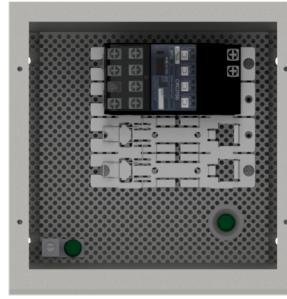




RC Series

Room Control Panel



Overview

The NexLight RC Series Room Control Panels provide distributed non-centralized control of lighting and are available in versions with or without 0–10V dimming. These panels function in an auxiliary capacity to a main panel and can also be accessed through the Graphic User Interface (GUI) for real-time programming, monitoring, and override. Powered solely by the NexLight 2-Wire Data Bus, these panels require no additional control power. Both come in a NEMA/Type 1 enclosure and are factory wired in NexLight's UL508A certified manufacturing facility.

Physical Specification

NEMA Type:	Type 1
Mounting:	Surface Mount
Operating Temperature:	14 °F - 131 °F (-10 °C - 55 °C)

Electrical (Line Voltage)

0–10V Sinking Current:	100 mA Per Dimming Circuit
0–10V High Trim:	100% - 50%
0–10V Low Trim:	0% - 50%

Features

- » Provide up to (4) zones of control per panel
- » Utilizes 10 A Hybrid Relays
- » Can be configured to provide 100 mA of sinking current per channel
- » Compatible with R Series, D Series, and Custom Panels

UL/cUL Certifications

General Use:	10 A @ 277 VAC
Tungsten:	10 A @ 120 VAC (1200 W) 10 A @ 240 VAC (2400 W)
Electronic Ballast:	10 A @ 277 VAC
Standard Ballast:	10 A @ 277 VAC (2400 W)

Electrical (Low Voltage)

Input 2-Wire Data Bus Voltage:	±24 VAC
Output 2-Wire Data Bus Voltage:	±24 VAC



Part Number

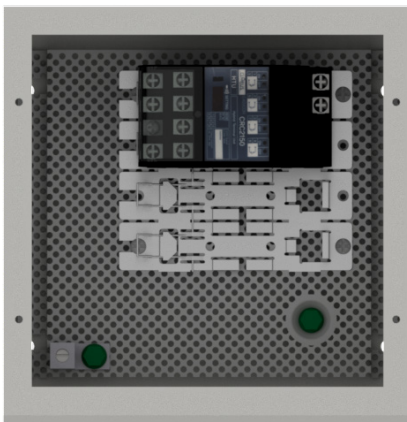
Sample Part Number:

NXL-RC4D

		Series	Capacity	Dimming
NXL	-	RC Room Control Panel	4 4 Relays	- D No Dimming 0-10V Dimming

Family Products

NXL-RC4



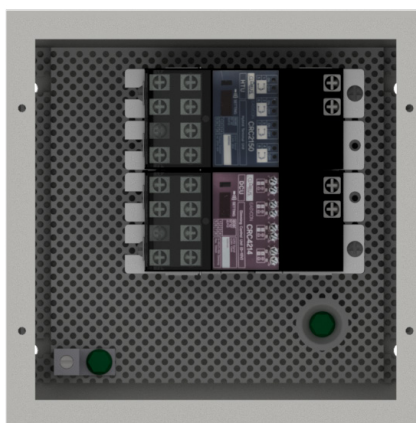
Included Components

- 1 CRC2150 Hybrid Terminal Unit
- 1 PA-80-1 Panel Assembly

Specifications

Dimensions:	8.00" H x 8.00" W x 4.00" D (203 mm x 203 mm x 102 mm)
Weight:	5 lb 15 oz (2.680 kg)
Relay Circuits:	4
Dimming Circuits:	0
System Addresses Used:	4
System mA Draw:	4.0 mA

NXL-RC4D



Included Components

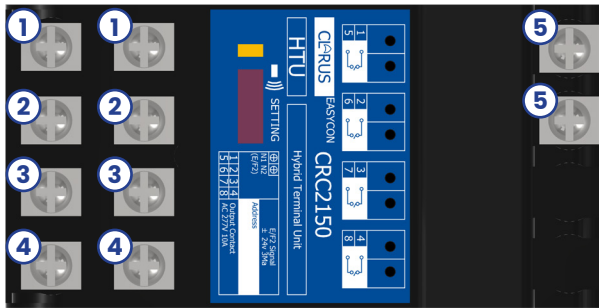
- 1 CRC2150 Hybrid Terminal Unit
- 1 CRC4214 Dimming Control Unit
- 1 PA-80-1 Panel Assembly

Specifications

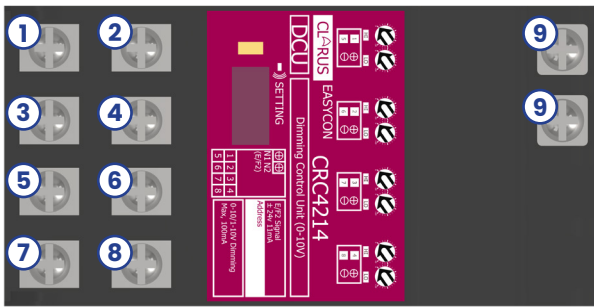
Dimensions:	8.00" H x 8.00" W x 4.00" D (203 mm x 203 mm x 102 mm)
Weight:	6 lb 4 oz (2.830 kg)
Relay Circuits:	4
Dimming Circuits:	4
System Addresses Used:	8
System mA Draw:	15 mA



Terminal Identification



1. Relay 1
2. Relay 2
3. Relay 3
4. Relay 4
5. 2-Wire Data Bus



1. Dimmer 1 (-)
2. Dimmer 1 (+)
3. Dimmer 2 (-)
4. Dimmer 2 (+)
5. Dimmer 3 (-)
6. Dimmer 3 (+)
7. Dimmer 4 (-)
8. Dimmer 4 (+)
9. 2-Wire Data Bus