



# VB-1

## Voltage Barrier

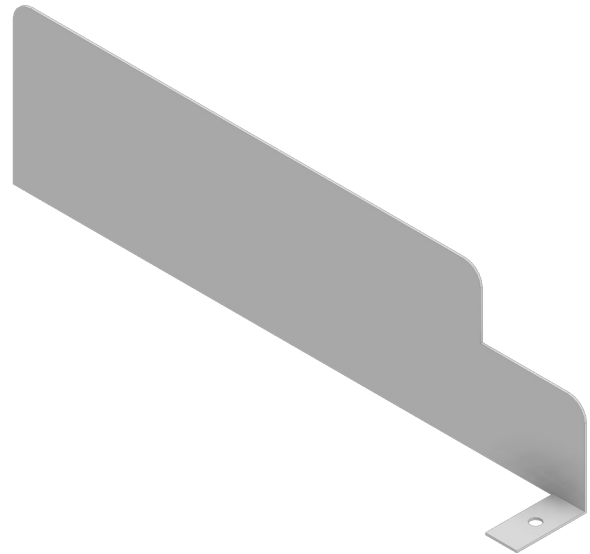
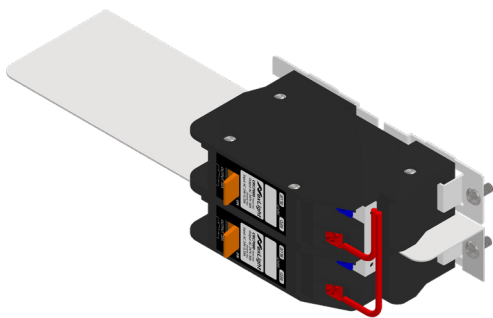
### Overview

The VB-1 Voltage Barrier physically separates electrical devices within NexLight panel installations, underscoring the critical role of physical barriers in lighting control panels. These barriers are essential for safety, operational integrity, and regulatory compliance. This clear physical partition streamlines troubleshooting, minimizes human error, and ensures the panel meets industry standards and electrical codes for reliable and safe operation.

### Physical Specification

|                    |                                                             |
|--------------------|-------------------------------------------------------------|
| <b>Dimensions:</b> | 2.31" H x 8.23" W x 1.00" D<br>(59 mm x 209 mm x 25 mm)     |
| <b>Mounting:</b>   | Standard Mounting Screw for<br>CRC9000 Panel Mounting Strap |
| <b>Weight:</b>     | 1.98 oz (56 g)                                              |

### Example



### Features

- » Ensures regulatory compliance by helping the panel meet essential industry standards and electrical codes that mandate specific separation and protection within electrical enclosures, vital for legal operation and product acceptance.
- » Provides clear physical partition between different voltages and circuit functions, which simplifies troubleshooting and reduces the likelihood of mistakes during panel work.
- » Designed for Field Installation: Allows for easy integration and separation of devices directly on-site within existing NexLight panels, offering flexibility and adaptability.

